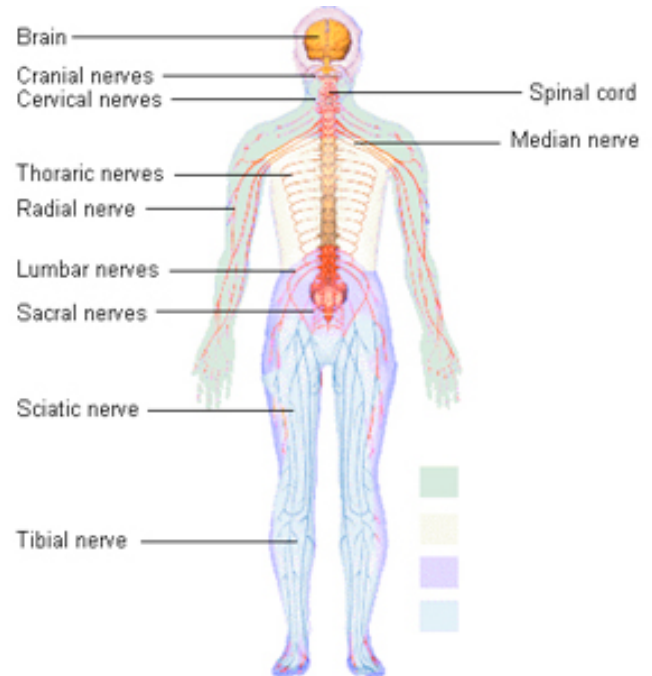
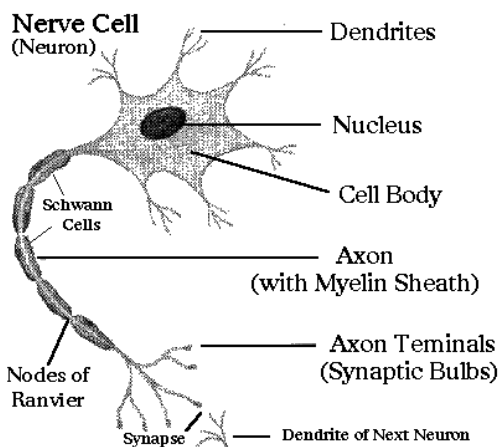


# The Nerve Cell

The basic unit of the nervous system is the nerve cell, or neuron. The basic function of the neuron is to transmit information. There are approximately 28 billion neurons in the human body penetrating every tissue in every part. Neurons vary greatly in size and shape, with the longest ones—those that extend down the leg as part of the sciatic nerve—measuring over one meter. All nerve cells have a similar structure.



Answer all of the following questions or statements:

- Include a title with your name(s) typed under it.
- A picture of the entire human body nervous system.
- How are the central and peripheral nervous systems similar and how are they different?
- A picture of a neuron labeled.
- Where are nerve cells found, and what is the size range of a nerve cell?
- Name the largest nerve in the body.
- Completely describe the CELL BODY, DENDRITES, AXON, MYELIN SHEATH and NODES of RANVIER.
- What is an interneuron and where are they found?
- What is the purpose of the myelin sheath and what nervous system disorder is a result of loss of that sheath?
- Which way is the signal sent in a nerve cell?
- Completely describe the synapse and what occurs there. Be sure to include any chemicals that may be present.

Info and Pic: [http://www.naturalhealthschool.com/9\\_2.html](http://www.naturalhealthschool.com/9_2.html)

Pic: <http://library.thinkquest.org/06aug/00440/bnervintro.html>

<http://www.contmediausa.com/shop/app/products/Human3D/human3dnervoussystem.html>

Record Sheet

Names \_\_\_\_\_ and \_\_\_\_\_

- Include a title with your name(s) typed under it. \_\_\_\_\_
  - Works Cited page with your names on it. \_\_\_\_\_
  - A picture of the entire human body nervous system. \_\_\_\_\_
  - How are the central and peripheral nervous systems similar and how are they different?
- 
- A picture of a neuron labeled. \_\_\_\_\_
  - Where are nerve cells found, and what is the size range of a nerve cell?
- 
- Name the largest nerve in the body.
- 
- Completely describe the CELL BODY, DENDRITES, AXON, MYELIN SHEATH and NODES of RANVIER.
- 
- 
- 
- 
- 
- 
- 
- 
- 
- 
- What is an interneuron and where are they found?
- 
- 
- 
- 
- 
- 
- 
- 
- 
- 
- What is the purpose of the myelin sheath and what nervous system disorder is a result of loss of that sheath?
- 
- 
- 
- 
- 
- 
- 
- 
- 
- 
- Which way is the signal sent in a nerve cell?
- 
- 
- 
- 
- 
- 
- 
- 
- 
- 
- Completely describe the synapse and what occurs there. Be sure to include any chemicals that may be present.